

Bencox[®]

Mirabo Multi hole Cup System



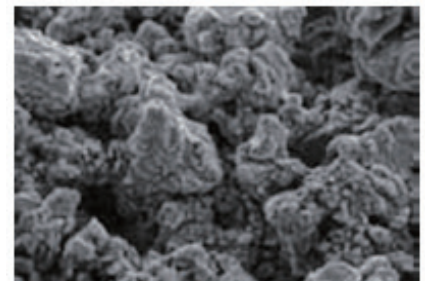
Bencox[®] Mirabo Multi hole Cup System



Surface Treatment

Plasma Sprayed Ti Coating

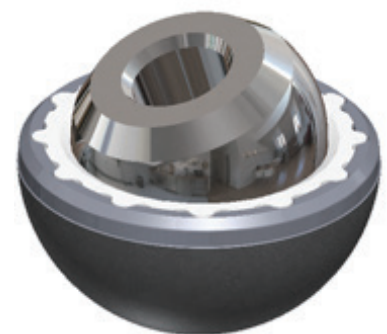
The surface treatment on an artificial joint is an essential factor for success; at the same time, it's the precise indication of a manufacturer's technique. Acetabular Component of Bencox Mirabo Multi hole Cup is coated using plasma spray method. The microporous pure titanium coating with more than 30% porosity leads to direct bone apposition for secondary stability. Rough surface supports a more stable primary fixation.



One Bearing Cup System

Locking Design allows for PE Liner in one cup

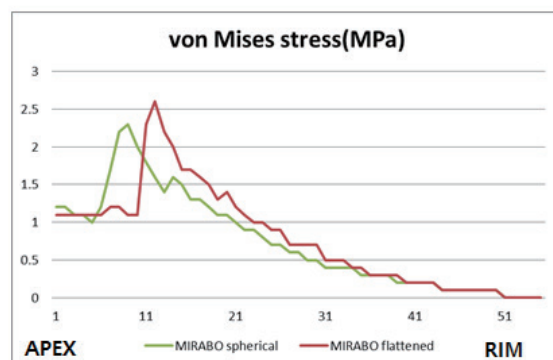
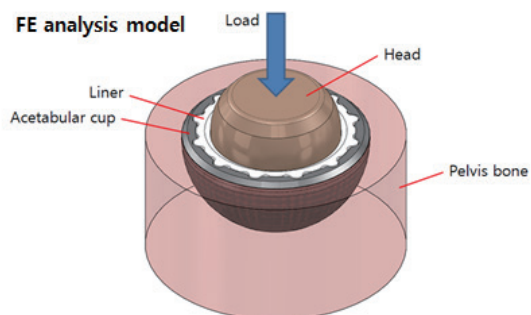
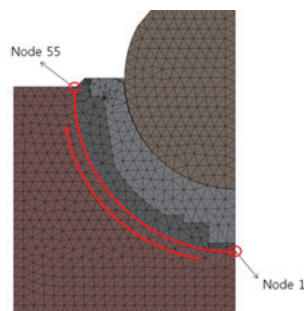
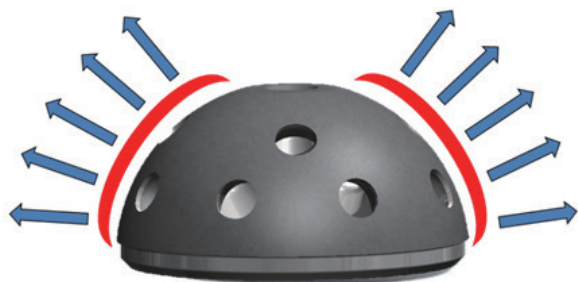
BENCOX MIRABO Multi hole CUP is uniquely designed with acetabular cup options, biological and mechanical fixation alternatives and advanced bearing technologies which provide you the power to choose the precise combination that best meets the individual needs of each patient. With options that include cross-linked polyethylenes, the surgeon has the ability to restore function, increase stability and reduce wear all within one acetabular cup.



Bencox[®] Mirabo Multi hole Cup System

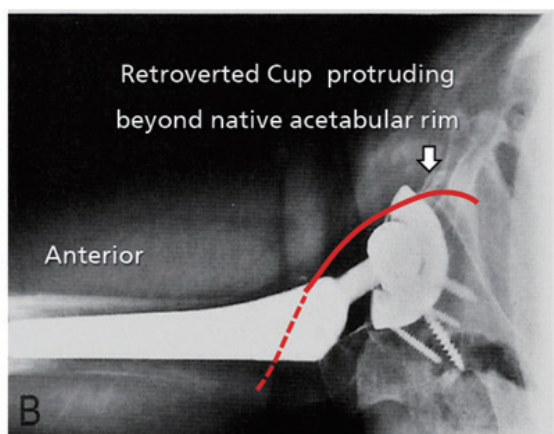
Slightly Flattened Dome

Slightly flattened dome establishes physiological load transfer throughout the periphery of the cup.



Slim Cup Rim to Avoid iliopsoas Tendon

Bencox Mirabo Multi hole Cup has the effect of reducing the effect on iliopsoas Tendon.



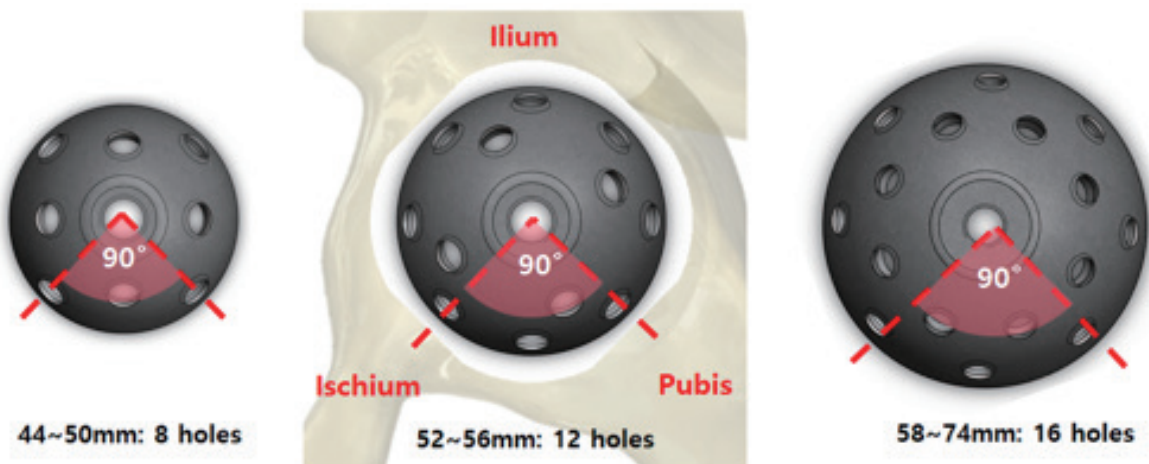
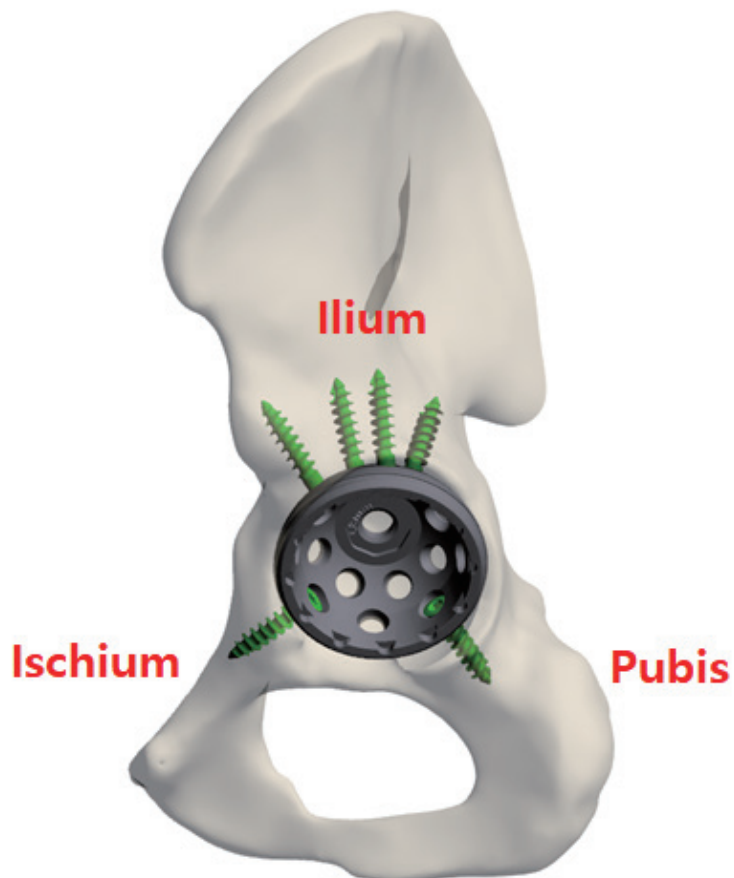
Source: Trousdale et al., JA 1995



Bencox[®] Mirabo Multi hole Cup System

Even Screw Hole Distribution for Easy Insertion

Multi hole option enables the screw insertion into the Ilium, Ischium and Pubis through even distributed holes to enforce the fixation strength of the cup. As the cup size increases, the number of screw holes increase. These screw holes are arranged to make 90° for the insertion into ischium and pubis



Bencox[®] Mirabo Multi hole Cup System

Combination Charts

Cup OD	44	46	48	50	52	54	56	58	60	62	64	66	68	70	72	74
Bencox Mirabo PE Liner	28/35	28/37	28/39		28/44			28/48			28/52					
			32/39		32/44			32/48			32/52					
					36/44			36/48			32/52			36/62		
								40/48			40/52			40/62		

Ordering Information

SIZE	Part No.	Description
44	H3.A15.0044	Bencox Mirabo Cup Multihole 44mm(A)
46	H3.A15.0046	Bencox Mirabo Cup Multihole 46mm(B)
48	H3.A15.0048	Bencox Mirabo Cup Multihole 48mm(C)
50	H3.A15.0050	Bencox Mirabo Cup Multihole 50mm(C)
52	H3.A15.0052	Bencox Mirabo Cup Multihole 52mm(D)
54	H3.A15.0054	Bencox Mirabo Cup Multihole 54mm(D)
56	H3.A15.0056	Bencox Mirabo Cup Multihole 56mm(D)
58	H3.A15.0058	Bencox Mirabo Cup Multihole 58mm(E)
60	H3.A15.0060	Bencox Mirabo Cup Multihole 60mm(E)
62	H3.A15.0062	Bencox Mirabo Cup Multihole 62mm(E)
64	H3.A15.0064	Bencox Mirabo Cup Multihole 64mm(F)
66	H3.A15.0066	Bencox Mirabo Cup Multihole 66mm(F)
68	H3.A15.0068	Bencox Mirabo Cup Multihole 68mm(F)
70	H3.A15.0070	Bencox Mirabo Cup Multihole 70mm(G)
72	H3.A15.0072	Bencox Mirabo Cup Multihole 72mm(G)
74	H3.A15.0074	Bencox Mirabo Cup Multihole 74mm(G)



Bencox® Mirabo Multi hole Cup System



Manufacturing Plant 12, Yeongsanhong 1-gil, Ipjang-myeon, Seobuk-gu, Cheonan-si, Chungcheongnam-do, Korea

Seoul Office 33-2, Banpo-daero 20-gil, Seocho-gu, Seoul, Republic of Korea

Corentec America 60 Washington St #202, Morristown, NJ 07960, United States

EC Representative : Emergo Europe Westervoortsedijk 60, 6827 AT Arnhem, The Netherlands

www.corentec.com