

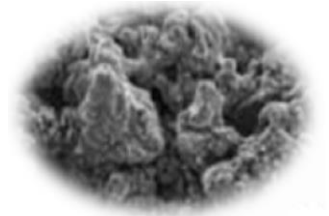
# Bencox Mirabo Cup



## Surface Treatment

### TPS Coating

The microporous pure titanium coating with pores of 50-200 $\mu\text{m}$  diameter and more than 30% porosity leads to direct bone apposition for secondary stability.



Mag. 100x

### Laser 3D Coating

Laser 3D coating technique produces layers of titanium powder using laser beam. The coating with pores of 200-500 $\mu\text{m}$  diameter and 70% porosity leads bone-in-growth. High roughness of Laser 3D coating allows about 1.4 times stronger initial fixation than Ti Plasma Spray coating.



Mag. 100x

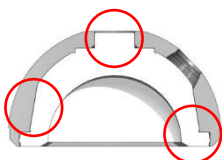
## Secure Locking Mechanism



- Taper to prevent micro-motion

### Locking with Ceramic Liner

Cup and ceramic insert provides a secure taper locking mechanism while providing a self-locating feature to ease insert placement.



- Post to resist tilting
- Taper to prevent micro-motion
- 12 tabs to resist tilting, push-out and rotation

### Locking with PE Liner

The locking mechanism between cup and PE liner allows for secure fixation with superior congruency for the push-out, rotation and tilting.

## Various choice of PE liner

Various choice for standard and 10°, 15°elevated types allows for the use in extended indication situations.



Standard type



Elevate type

HEAD SIZE	OUTER DIAMETER	LOADING POINT	DOMES
28mm	37mm	6.9mm	5.8mm
28mm	39mm	7.3mm	5.8mm
28mm	44mm	10.1mm	8.5mm
28mm	48mm	11.3mm	9.9mm
28mm	52mm	13.0mm	11.8mm
32mm	44mm	8.1mm	6.3mm
32mm	48mm	9.3mm	7.9mm

HEAD SIZE	OUTER DIAMETER	LOADING POINT	DOMES
32mm	52mm	11.0mm	9.8mm
36mm	44mm	6.9mm	5.3mm
36mm	48mm	8.1mm	6.9mm
36mm	52mm	9.8mm	8.8mm
40mm	48mm	7.9mm	6.9mm
40mm	52mm	9.6mm	8.8mm

## Slightly flattened dome

Slightly flattened dome establishes physiological load transfer throughout the periphery of the cup



## Combination Chart

Cup Size	46mm	48mm	50mm	52mm	54mm	56mm	58mm	60mm	62mm	64mm	66mm	68mm
Ceramic Liner	28/37G	32/39G		36/44G			36/48G			36/52G		
PE Liner	28/37G	28/39G		28, 32, 36/44G			28, 32, 36/48G			28, 32, 36/52G		

\* Unusable combination: PE Liner Elevated type assembled with Skirted 28 & 32 metal head

# Bencox Mirabo Cup

## Ordering Information

### Bencox Mirabo Cup

Mirabo Cup (TPS Coating)		Mirabo Z Cup (Laser 3D coating)	
Part No.	Description	Part No.	Description
H1.A11.1046	Cup 46	H1.A23.1046	Z Cup 46
H1.A11.1048	Cup 48	H1.A23.1048	Z Cup 48
H1.A11.1050	Cup 50	H1.A23.1050	Z Cup 50
H1.A11.1052	Cup 52	H1.A23.1052	Z Cup 52
H1.A11.1054	Cup 54	H1.A23.1054	Z Cup 54
H1.A11.1056	Cup 56	H1.A23.1056	Z Cup 56
H1.A11.1058	Cup 58	H1.A23.1058	Z Cup 58
H1.A11.1060	Cup 60	H1.A23.1060	Z Cup 60
H1.A11.1062	Cup 62	H1.A23.1062	Z Cup 62
H1.A11.1064	Cup 64	H1.A23.1064	Z Cup 64
H1.A11.1066	Cup 66	H1.A23.1066	Z Cup 66
H1.A11.1068	Cup 68	H1.A23.1068	Z Cup 68

### Bencox Mirabo PE Liner

Part No.			Description
Standard Type	10°Elevated Type	15° Elevated Type	
H1.L61.2837	H1.L67.2837	H1.L66.2837	28/37
H1.L61.2839	H1.L67.2839	H1.L66.2839	28/39
H1.L61.2844	H1.L67.2844	H1.L66.2844	28/44
H1.L61.2848	H1.L67.2848	H1.L66.2848	28/48
H1.L61.2852	H1.L67.2852	H1.L66.2852	28/52
H1.L61.3244	H1.L67.3244	H1.L66.3244	32/44
H1.L61.3248	H1.L67.3248	H1.L66.3248	32/48
H1.L61.3252	H1.L67.3252	H1.L66.3252	32/52
H1.L61.3644	H1.L67.3644	H1.L66.3644	36/44
H1.L61.3648	H1.L67.3648	H1.L66.3648	36/48
H1.L61.3652	H1.L67.3652	H1.L66.3652	36/52

### Dome Hole Plug

Part No.	Description
H1.A11.0000-002	Dome Hole Plug

### Bencox Bone Screw

Part No.	Description
H1.B11.0015	Bone Screw 15mm
H1.B11.0020	Bone Screw 20mm
H1.B11.0025	Bone Screw 25mm
H1.B11.0030	Bone Screw 30mm
H1.B11.0035	Bone Screw 35mm
H1.B11.0040	Bone Screw 40mm
H1.B11.0045	Bone Screw 45mm
H1.B11.0050	Bone Screw 50mm
H1.B11.0055	Bone Screw 55mm
H1.B11.0060	Bone Screw 60mm

**Manufacturing Plant** 12, Yeongsanhong 1-gil, Ipjang-myeon, Seobuk-gu, Cheonan-si, Chungcheongnam-do, Korea  
Tel : 82-41-585-7114 Fax : 82-41-585-7113

**Seoul office** 483, Gangnam-daero, Seocho-gu, Seoul, Korea Tel : 82-2-3445-5492~5 Fax : 82-2-3445-5467,5497

**Corentec America** 17305 Von Karman Ave. Suite 114, Irvine, CA 92614, USA Tel : 1-949-379-6227 Fax : 1-949-387-5716

**EC Representative : Emargo Europe** Molenstraat 15, 2513 BH, The Hague, The Netherlands Tel : 31-70-345-8570 Fax : 31-70-346-7299